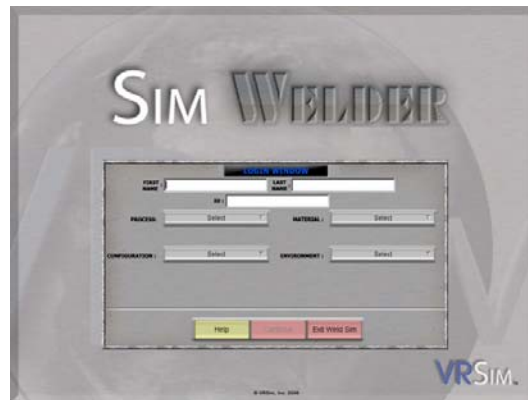


SIM WELDER™

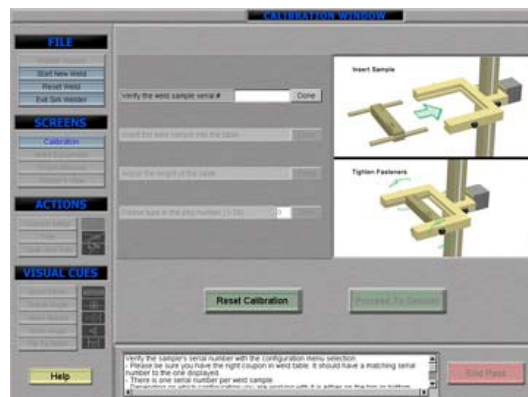
Horizontal position Tee Joint:

SimWelder GMAW Educational Sequence

- 1) Login
(Log in and choose weld configuration)



- 2) Coupon calibration
(Prepare the coupon)



- 3) Equipment screen
(Set the proper welding settings)



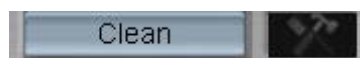
- 4) Welder's view
(Run a pass)



- 5) End pass
(Press button to indicate that the pass is complete)



- 6) Clean
(Press button to indicate cleaning the weld)



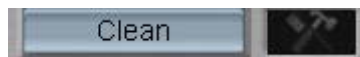
7) Welder's view
(Run a pass)



8) End pass



9) Clean



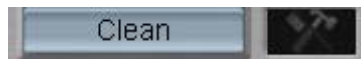
10) Welder's view
(Run a pass)



11) End pass



12) Clean



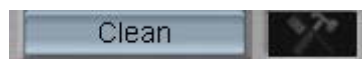
13) Welder's view
(Run a pass)



14) End pass



15) Clean



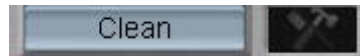
16) Welder's view
(Run a pass)



17) End pass



18) Clean



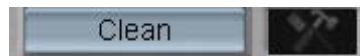
19) Welder's view
(Run a pass)



20) End pass



21) Clean



22) Quench

